



दक्षिण मध्य रेलवे SOUTH CENTRAL RAILWAY

# यांत्रिक विभाग MECHANICAL BRANCH

गुंटूर मंडल GUNTUR DIVISION



# **OVERVIEW**

The Mechanical Wing is headed by Sr. DME and assisted by ADME/Power & EnHM and ADME/C&W.

ADME/Power & EnHM is looking after the works related to Power, EnHM wing and Disaster Management.

Power wing consists of four lobbies at Guntur, Nallapadu, Nadikudi and Nandyal and Six running rooms at Guntur, Nallapadu, Nadikudi, Nandyal, Donakonda and Bommaipalli, three rest rooms at Macherla, Miryalaguda and Giddalur.

Environment and housekeeping management wing is a part of mechanical branch and is in operation since 16.04.2017 with a vision to improve cleanliness and better housekeeping of Nominated railway stations and onboard housekeeping of coaches and environment related activities/ programs at railway establishments. Implementation of Directions of Hon'ble NGT orders for nominated Stations with co-ordination of all departments to achieve the environment related certificates, consent orders, works, audits, as per the CPCB guidelines.1`

ADME/C&W is looking after the work of Carriage and wagon, In-motion weigh bridges. There is one coaching depot at Guntur, one freight depot at Nallapadu, two satellite C&W depots at Nandyal and Vishnupuram. There is one 'B' class ART, one SPARMV and one Road Mobile Accident Relief Van stationed at C&W/Depot/Guntur. Three In-Motion Weighbridges (EIMWB) are located one each at Naallpadu, Nandyal and Nadikude are being maintained by Mechanical C&W Wing. There are six private owned In-Motion Weighbridges available over GNT division and two tipplers are being monitored by Mechanical wing.

# शक्ति विभाग POWER BRANCH



## 1. Crew lobbies

Place	GNT	NDL	NLPD	NDKD	BZA
Type	Major	Major	Major	Major	Satellite depot
No of Crew sign-on/ sign-off per day	327	284	181	112	10

## 2. Running Rooms/Rest Rooms



Running Rooms	GNT	NLPD	NDKD	NDL	DKD	BMMP
No. of beds	38	32	28	64	15	15
Mode of maintenance	Out Sourced					
Subsidised meal	Available					

Rest Rooms	MCLA	GID	MRGA
No. of beds	3	4	3

### 3. Highlights of Running Rooms

- o Air condition to all bed rooms.
- o Meditation room, Reading Room, Dining hall & Kitchen etc.
- o Drinking water with water coolers.
- o Outsourced in all respects including housekeeping, subsidized food supply etc.,
- o Solar hot water system.
- o Mosquito repellents/Mosquito nets.
- o Container bed room accommodation at NDKD, DKD and BMMP stations with 2/3 beds with Air conditioning, fans and lights etc.,

#### Container bed room accommodation at NDKD, DKD and BMMP







# सवारि एवं माल डिब्बा **CARRIAGE AND WAGON**



## **I. Over View**

### **A. Assets:**

S No	Description	GNT	NLPD	DMT	NDL	NDKD	VNUP	Total
1	Coaching Depot	1	-		-	-	-	1
2	ART B Class	1	-	-	-	-	-	1
3	SPARMV	1	-	-	-	-	-	1
4	Satellite C&W depot	-	-	-	1	-	1	2
5	Freight Depot	-	1	-	-	-	-	1
6	Carriage Watering	1	-	1	-	-	-	2
7	EIMWBs	-	1		1	1	-	3

### **B. List of Activities:**

- Primary maintenance at GNT:** 5Express trains with 14 rakes are being maintained at Coaching Depot/Guntur.

S No	Train Number	No of Rakes	Load
1	17240/12747 Simhadri Exp/Palnadu Exp	3	22
2	17202/17201 Golconda Exp LHB rake	2	21
3	17244/17251 GNT-KCG-GNT /Rayagada Exp	4	19
4	17253/17254 GNT-AWB-GNT Exp	3	18
5	17261/17262 GNT-TPTY-GNT Exp	2	17

- Other end Maintenance at Guntur:** 8 trains on PF/Pit line.

S No	Train Number	Load
1	17261/17262 GNT-TPTY-GNT Express	17
2	17282/17228 NS-GNT-DHNE Express	15
3	17227/17282 DHNE-GNT-NS Express	15
4	12705/12706 SC-GNT-SC Intercity Express	20
5	17252/17243 GNT-KCG-GNT /Rayagada Exp	19
6	12748/17239 Palnadu Exp/Simhadri Exp	22
7	17202/17201GNT-SC-GNT Golconda Exp.	21
8	22701/22702 VSKP-GNT-VSKP Uday Express	09

3. **Other end maintenance over GNT division: 8 trains i.e., NDKD-2, MCLA-1, RAL-3 and NDL-2.**

S No	Station	Train No.
1	NDKD	07791/07792 KCG-NDKD-KCG MEMU Exp
2	NDKD	07277/07973 MEMU Exp
3	MCLA	07781/07782 MEMU Exp
4	RAL	17625/17646 KCG-RAL-SC Exp
5	RAL	17645/17626 SC-RAL-KCG Expr
6	RAL	07888/07889 MEMU Exp
7	NDL	07285/07498 MEMU Exp
8	NDL	07499/07284 MEMU Exp

4. Carriage watering of Pass through trains at Guntur: 10daily and 04 non-daily trains are being attended carriage watering at Guntur. Carriage watering complaints for all the trains is being attended at Guntur.
5. **Carriage watering** at Diguva metta (DMT) station: 07 trains are being attended carriage watering at DMT
6. Disaster management equipped with one B' class ART, SPMRV and Road Mobile accident relief van
7. Maintenance of Three Railway owned Electronic In Motion Weigh bridges and monitoring of 6 private owned Electronic In Motion Weigh bridges at different sidings

i. **Coaching depot/GNT**





Beautiful garden maintained at coaching depot/GNT



## ii. Coach Watering at GNT



## iii. Coach watering at DMT



## iv. OEM at RAL

High pressure Jet system for the use of Toilets Cleaning on OEM Trains at RAL station





1. ART – B class commissioned on 22/02/2005 to attend any derailments over GNT division with a technical team consisting of 28 staff



2. HS-SPMRV: Commissioned on 20/11/2020 to attend any unusual incidents involving passengers.



3. RMARV commissioned on 18/01/2023 to attend minor derailments in sidings and stations with road approach.





## II. Freight Depot at NLPD

Facilities were developed on Road No.10 at NLPD yard for premium examination of rakes

- Concrete pathway on both sides for movement of men and materials.
- Waist level lighting and street lighting on both sides of the examination Line.
- Sick Shed for attending wagon repairs with all facilities.
- Stabling line for stabling the sick & fit wagons.
- Provision of welding plants and input & output supply points for attending on train repairs.

### 1. **Freight Train Examination at FD/Nallapadu:**

S No	Year	No of Rake Examined	% increase over previous year
1	2021-22	315	--
2	2022-23	459	(+) 46%
3	2023-24	496	(+) 8%



Freight Examination line (Road No.10 )



Sick Shed at NLPD



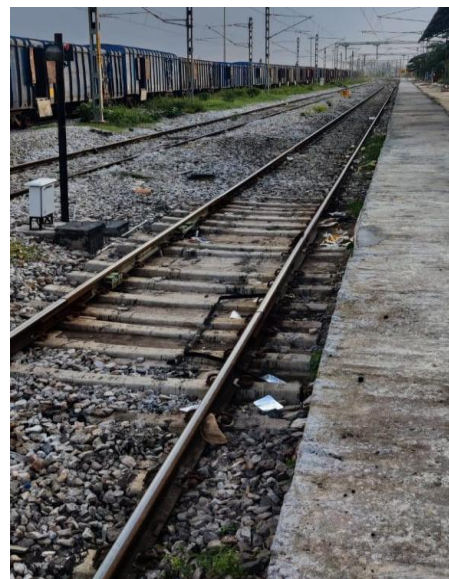
## 2. Electronic In-motion Weight Bridge at NLPD



## 3. Electronic In-motion Weight Bridge at NDL



## 4. Electronic In-motion Weight Bridge at NDKD



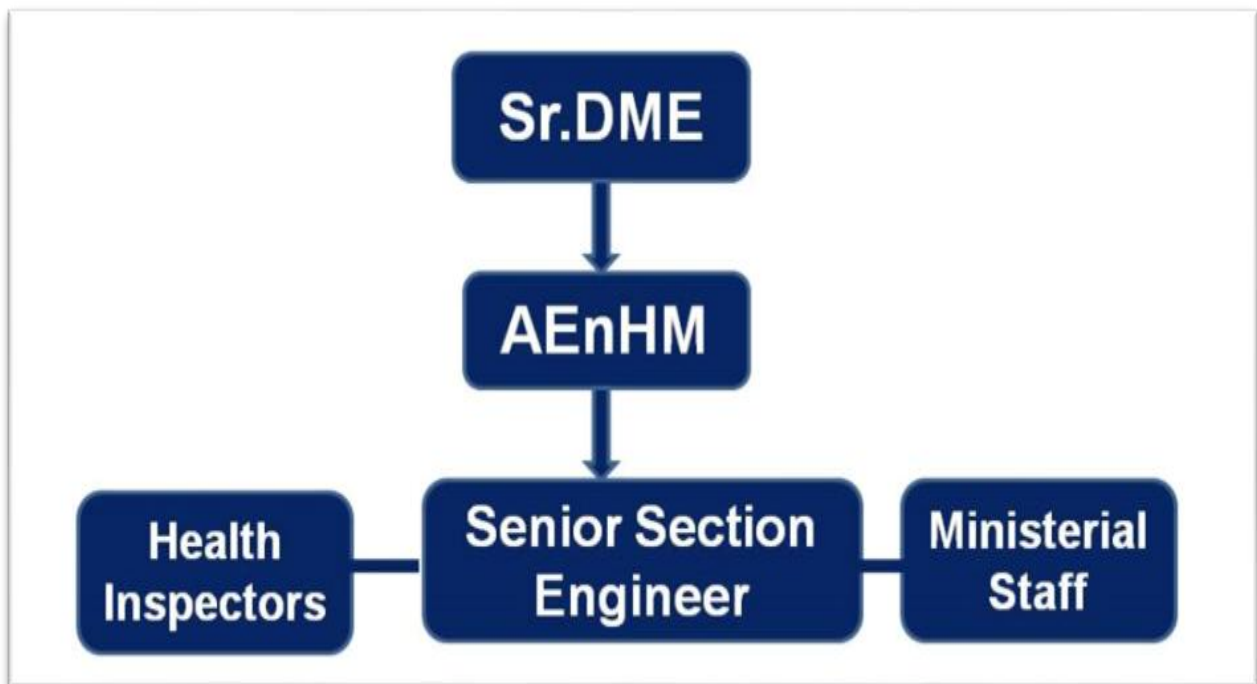




## पर्यावरण एवं हवुसकीपिंग प्रबंधन ENVIRONMENT AND HOUSEKEEPING MANAGEMENT

### ENVIRONMENT AND HOUSEKEEPING MANAGEMENT

- Environment and housekeeping management wing is a part of mechanical and is in operation since 16.04.2017 and a vision to improve cleanliness and better housekeeping of Nominated Railway stations and On-Board Housekeeping of coaches and Environment related activities/ programs at Railway establishments.
- The EnHM wing is headed by Sr.DME, assisted by AEnHM with overall guidance by DRM and ADRM/OP
- One Junior Engineer, Three Health Inspectors, one Ministerial staff and One Technician.
- Organization Chart of EnHM Wing





➤ **Environment and housekeeping Management (EnHM) Activities:**

- Mechanized Cleaning and Housekeeping of GUNTUR Railway Station.
  - Daily Cleaning and Housekeeping of Nandyal Station Including Railway colony.
  - Daily Cleaning and Housekeeping of 13 Railway stations (i.e., GID, CBM, MRK, DKD, VKN, NRT, MAG, RAL, PGRL, SAP, NDKD, MRGA & NLDA) and 13 Railway colonies(i.e., MCR Colony-GNT, Down Colony-GNT, Loco Colony-GNT, Gosala Colony-GNT, New GNT Colony-NGNT, SAP, NDKD, MRGA, NLDA, GID, DKD, NRT & PGRL) over GNT Division.
  - Implementation of Directions of Hon'ble NGT orders for nominated Stations with co-ordination of all departments to achieve the environment related certificates, consent for orders, works, audits, as per the CPCB guidelines.
  - Monthly PCDO & NGT compliances and monthly Reports to HQs.
  - Updating of Shramik Kalyan portal regularly.
  - Conducting of Swachh Bharat programs, Swachha Pakhwada programs and world Environment day celebrations with the cooperation of other Departments.
  - Green certification for stations/Establishments.
  - Utilization of 0.5% ERW funds for Environmental related activities.
- Waste compost Machine available at GNT Railway Station under the supervision of CHI/Station/GNT. The machine is fed with 80% discarded food and 20% dry leafs or sawdust and run around 24Hours working.

➤ **ISO 14001-2015 EMS Certification-2021**

S. No	Station	Category	Validity	
			From	To
1	GNT	NSG-3	30/03/2024	29/03/2027
2	NDL	NSG-4	30/03/2024	29/03/2027
3	RAL	NSG-4	30/03/2024	29/03/2027
4	MAG	NSG-4	30/03/2024	29/03/2027

➤ **CFE/CFO- Consent orders received for four stations from APPCB**

S.No	Station	Category	Validity	
			From	To
1	GNT	NSG-3	16/02/2021	31/01/2026
2	NDL	NSG-4	13/07/2021	31/03/2025
3	RAL	NSG-4	16/02/2021	31/01/2026
4	MAG	NSG-4	16/02/2021	31/01/2026

- 400KLD CAPACITY SEWAGE TREATMENT AND RECYCLING PLANT COMMISSIONED ON 29.01.2021 AT COACHING DEPOT GUNTUR



- 100KLD CAPACITY SEWAGE TREATMENT PLANT COMMISSIONED ON 22.11.2022 AT NDL Railway STATION

