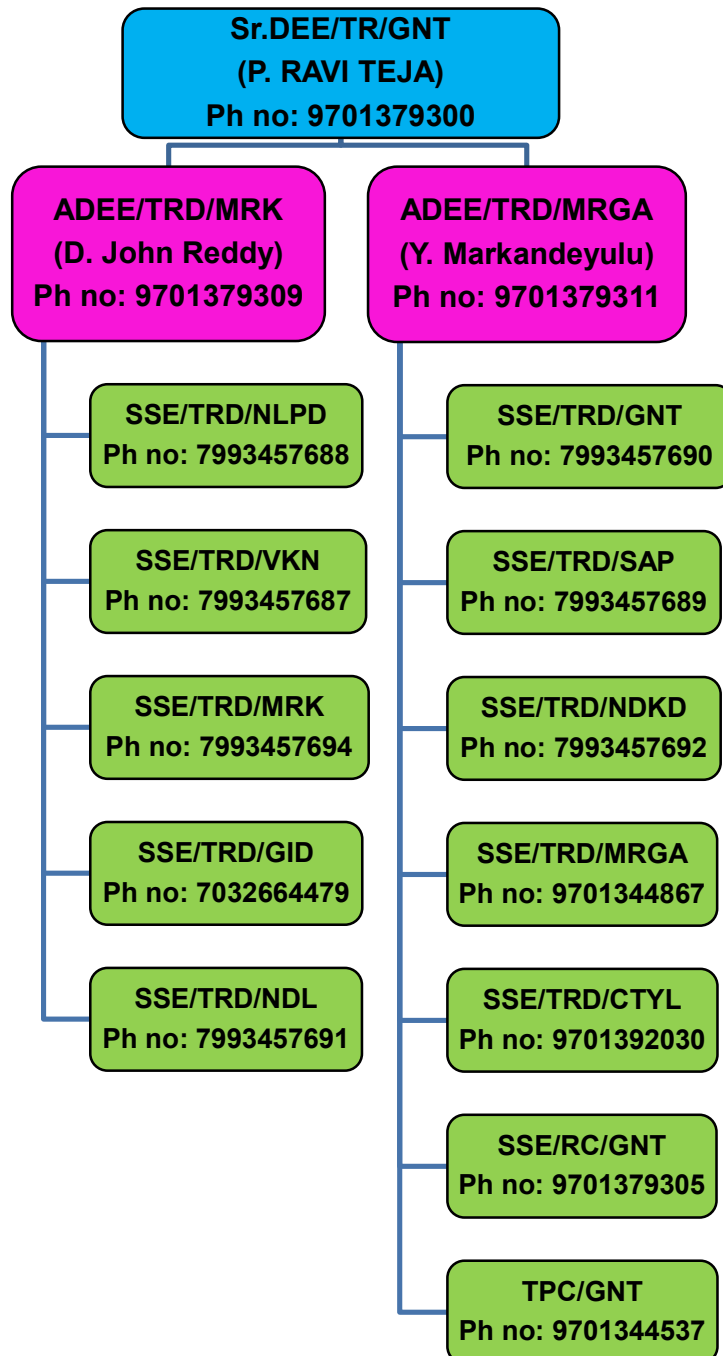


## Organization setup of Electrical/TRD dept – GNT division



## ELECTRICAL DEPARTMENT – TRACTION DISTRIBUTION

The Traction Distribution department in Guntur division is headed by Sr.DEE/TR/GNT and assisted by Sub-Divisional officers at Miryalaguda & Markapuram. The main function of this department is timely maintenance and repair of Traction Power Supply Installations (PSI), Over Head Equipment (OHE), Supervisory Control and Data Acquisition systems (SCADA) etc. and ensure uninterrupted power supply to traction services for movement of trains. Guntur division consists of 10 TRD depots and 9 Traction Sub-stations.

### Salient features of Electrical/TRD department – Guntur division:

Parameters/ Item	2025 – 26 (As on 30.07.2025)
Electrified RKM	678.752
Electrified TKM (Including sidings)	1283.735
No. of TRD depots	10 (GNT, SAP, NDKD, MRGA, CTYL, NLPD, VKN, MRK, GID & NDL)
No. of Traction Sub-stations	9 (NLPD, SYM, GJJ, YADA, NDL, SAP, GZA, MRGA & RMNP)
No. of SSPs	37
No. of SPs	12
Traction Power Control (TPC)	Guntur
Remote Control (RC) center	Guntur
Tower Cars	
8-Wheeler:	8 (GNT, NLPD, VKN, MRK, NDL, SAP, NDKD & CTYL)
4-Wheeler:	4 (GID, SAP (2) & MRGA)
Sanctioned staff strength (Including Ministerial & Drawing)	211
Actual staff strength (Including Ministerial & Drawing)	167

### Innovations, Achievements and System Improvements:

- **Traction Distribution Efficiency Shield** was bagged by Guntur Division during 68th Railway Week Award (Vishisht Rail Seva Puraskar-2023) which was given by GM/SCR.
- **Event/alarm indication in TPC whenever Control/Battery Room door opened/closed at SP/SSPs by using existing SCADA system to avoid theft:** By this innovation, we can record every event of door open/close in SP/SSPs with date & time in SCADA of concerned SSP/SP. It will be helpful in unauthorized door open/close and can be known in case of any theft & immediately TPC can alert Depot in-charge & Station master for lookout. Hence, theft of battery cells, earth rods etc. in SP/SSPs can be avoided.
- **Model OHE erected at MRGA & MRK:**
  - ❖ Model OHE is erected by using released & un-serviceable items to ensure effective utilization of released assets.
  - ❖ For imparting training to newly recruited staff on all types of OHE arrangement and to counsel the staff periodically on safety & maintenance practices.