

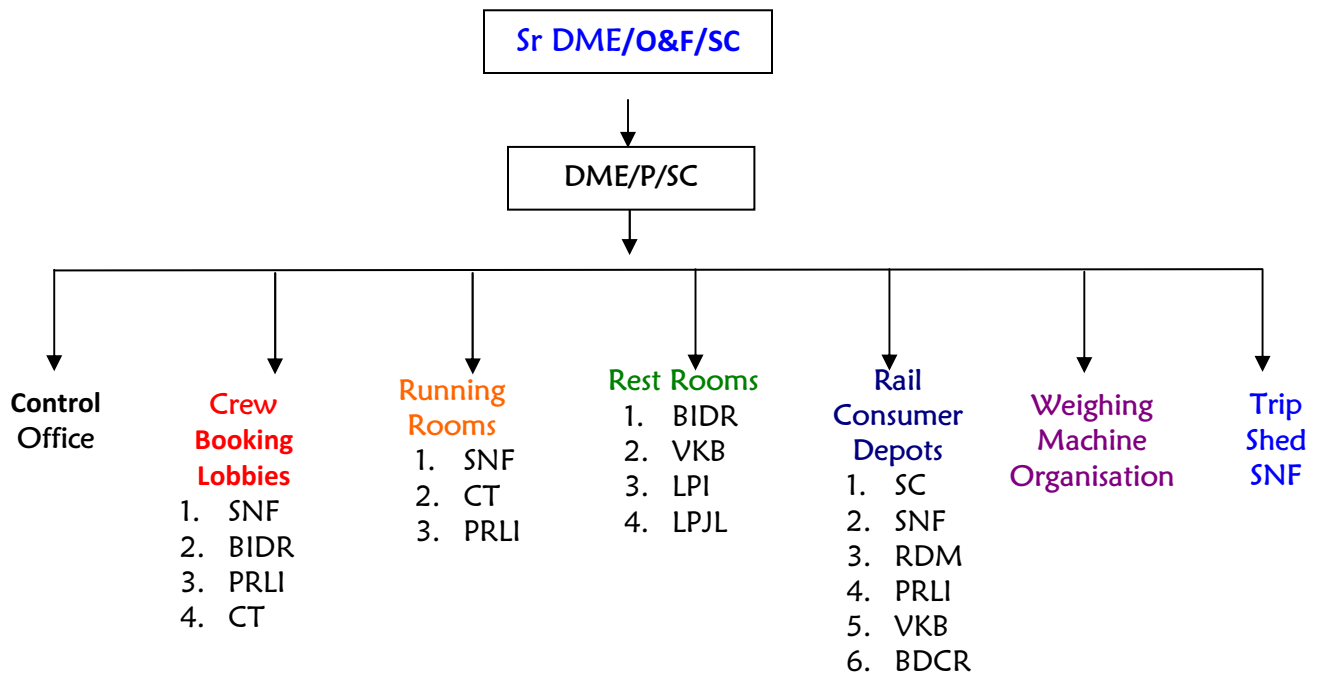
MECHANICAL O & F BRANCH - SECUNDERABAD DIVISION

4 (b)(i) Particulars of Organisation – Functions/Duties

The Mechanical Power Branch/SC is contributing in achieving excellence in following fields.

- Availability of crew and crew booking
- Maintenance of freight stock
- Maintenance of In motion weigh bridges
- Maintenance of Weighing machines
- Maintenance of Diesel Trip shed at Sanathnagar
- Maintenance of Running/Rest Rooms
- Maintenance and operation of Rail Consumer Depots (Fuel Installations) .

Organisation Structure



Running Rooms & Rest Rooms

SI No	Running/ Rest Room	Category	Cooking Facilities	Maintenance
1	Chittapur	Major	√	Outsourced
2	Vikarabad	Minor	X	Railway
3	Lingampalli	Minor	X	Railway
4	Sanathnagar	Major	√	Outsourced
5	Bidar	Minor	√	Railway
6	Parli	Major	√	Outsourced
7	Lingampet Jagithyal	Minor	X	Railway

RCDs

SI No	Depot	DOC	Type	Capacity	Mode of Delivery	OIL Company	Maintenance
1	BDCR	Mar'1987	Medium	227 KL	Road	HPCL	Railway
2	SNF	Feb'2000 Apr'2001	Major	205 KL (45x3) + (1x70)	Road	BPC	Railway
3	PRLI	Oct'1996	Medium	253 KL	Road	IOC	Railway
4	RDM	Dec'1976 Dec'2005	Minor	140 KL (70+70)	Road	IOC	Railway
5	VKB	Feb'1990 May'1983	Major	463 KL (230+233)	Road	IOC& BPC	Railway
6	SC	Nov' 1999 2007	Major	210 KL (3x70)	Road	BPC	Railway

Diesel Trip Shed / Sanathnagar (Established in the year 1997)

Facilities provided:

- Covered area of 7 x 40 Sq.mts
- Pit line of 26 Meters
- De-mineralized water plant
- Welding plant
- Compressor
- PU Flooring

Details of Weighing Machines Provided in Division

Under commercial dept. for public utility		Other Departmental usage	
Capacity	No. of Machines	Capacity	No. of Machines
4000 Kg	4	2000 Kg	4
2000 Kg	1	1000 Kg	30
1000 Kg	57	500 Kg	25
500 Kg	30	300 Kg	2
250 Kg	1	250 Kg	3
		100 Kg	2
TOTAL	93	TOTAL	66

Periodicity maintenance of Weighing Machines

POH - Once in a year

Maintenance of the machines

(Other than Hd.qrs. area) - Once in 2 months

Machines of Hd. Qrs. Area - Once in a month

4 (b)(ii) Power and duties of Officers and employees

- ❖ Sr. DME (O&F)/SC - Overall In charge for Freight and Operations wing.
- ❖ DME (Power)/SC - Assisting Sr. DME(O&F)/SC in respect of Diesel Locomotive operation as well as maintenance of Freight stock in the Division.
- ❖ Crew Controllers - Booking of Crew for working trains as well as ensuring they are not due for Technical, G&SR refresher courses and PME.
- ❖ Chief Power Controller- Monitoring the Crew working on train services and movement of diesel locomotives.
- ❖ Chief Loco Inspectors - Monitoring the Crew in the enhanced driving techniques and also conducting drivers ordered by the administration.
- ❖ Loco Pilots - Locomotive running Crew
- ❖ Asst. Loco Pilots - Assisting to Locomotive running Crew
- ❖ LocoPilot (Shuter) - Locomotive running crew other than mainline
- ❖ SSE/DTS/SNF - Schedule attention of Diesel locomotives and trouble shooting enroute.
- ❖ WMI/CKL - Maintenance, stamping of weighing Machines by State Legal Metrology Department officials .

4 (b)(iii) Procedure followed in the decision making process including channels of supervision and accountability.

As per the limitations framed in schedule of powers (SOP) for various aspects such as establishment, stores and miscellaneous matters decision will be taken at the appropriate level,

As far as train working is concerned, Working Time Table (WTT) latest edition will be followed apart from General and Subsidiary Rules (G&SR).

4 (b)(iv) Norms set for discharge of functions

As per the targets fixed by Hd. Qrs as well as Division.

4 (b)(v) Rules, regulations, instructions, Manuals & Records used for discharging its functions

Schedule of Powers (SOP)
Working Time Table (WTT)
G&SR Manual
White Manual for diesel locomotive maintenance
C&W Manual for maintenance of Freight stock
CMS
CRIS

4 (b)(vii) A Statement of the boards, councils, committees and other bodies constituted

Running Room Committee
Signal Sighting Committee

4 (b)(ix) The directory of its employees and its officials

CUG as well as Railway Phone numbers of the officials in this branch

Sri Hemsingh B, Sr. DME (O&F)/SC - 9701371403
Sri D. Sanjeeva Rao, DME (Power)/SC - 9701371401

4(b)(xi) The budget allocation to each Department indicating the particulars of all plans, proposed expenditure, and reports on disbursements made

Budget provided under primary unit – 28 (Non-stock) – Rs. 0.45 lakhs for Running Room maintenance.

Budget provided under primary unit – 32 (Contractual payments) – Rs. 1.47 lakhs for Running Room maintenance.

Budget provided under primary unit – 27 (Stock) – Rs. 47.92 lakhs for procurement of HSD oil for running of freight and coaching services.