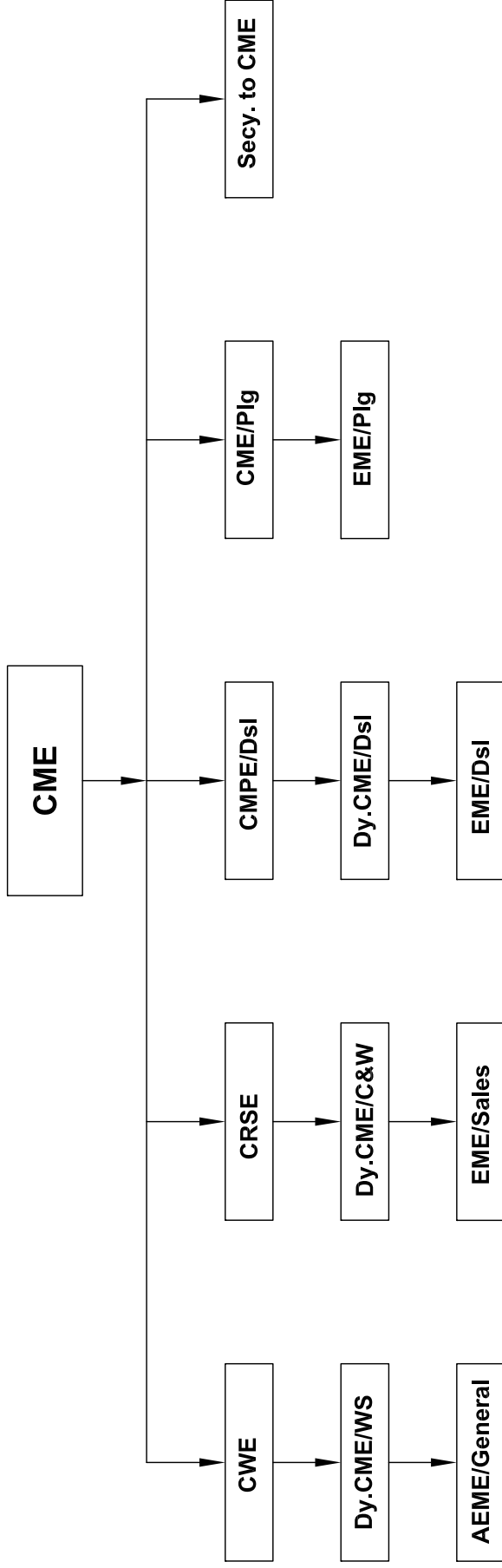


(As on 04-07-2012)

CME's Office Organization (Gazetted Level) Duties and Responsibilities



Works under CWE:-
Overall in charge for the running of workshops in the maintenance of rolling stock.

Works under Dy.CMEWS:-
Nodal officer at headquarters for workshops on S.C.Railway assisting CWE.

Works under AEME/General:-
Assist Dy.CMEWS and CME/CME and oversee day to day working of C&W drawing office.

Works under CRSE:-
In charge of maintenance and related issues of Carriage and Wagon at open line.

Works under Dy.CME/C&W:-
Nodal officer at headquarters for Carriage and Wagon maintenance on S.C.Railway assisting CRSE.

Works under EME/Sales:-
To assist CRSE and Dy.CME/C&W in day to working of Carriage and Wagon branch at headquarters.

Works under CMPE/Dsl:-
In charge of maintenance and running of Diesel Loco Motives and related issues including DMUs and DHMUs.

Works under Dy.CME/Dsl:-
Nodal officer at headquarters for maintenance of diesel locomotives on S.C.Railway assisting CMPE/Dsl.

Works under EME/Dsl:-
To assist CMPE/Dsl and Dy.CME/Dsl in day to day working of Diesel branch at headquarters.

Works under CME/PIg:-
In charge for processing and monitoring of various work programme and Machinery and Plant programme in co-ordination with workshops and divisions.

Works under EME/PIg:-
To assist CME/PIg in working of Planning branch of headquarters.

Works under Secy. to CME:-
In charge for CME's office Administration and also cadre officer for assisting CME in this regard.