



SOUTH CENTRAL RAILWAY

Office of the DRM/T/SC
Secunderabad Division
Sanchalan Bhavan
SECUNDERABAD

No: C/T/14/Staff/12/2018

Date:01.12.18

APO-I/SC

Sub: Selection to the post of Section Controller in Level-6 of pay matrix in RS (RP) Rules-2016 (GP 4200) against 75% Promotional quota in Operating Department, Secunderabad Division.

Ref: Your office letter No.SCR/P-SC/110/SCOR/OPTG/2018 Dt. 24.09.2018

With reference to the above notification, Question bank is prepared for the benefit of eligible candidates for Section Controller exam. The same may be uploaded in the system.


DOM/SC

Question and Answers for Section Controllers Examination Secunderabad Division - 2018

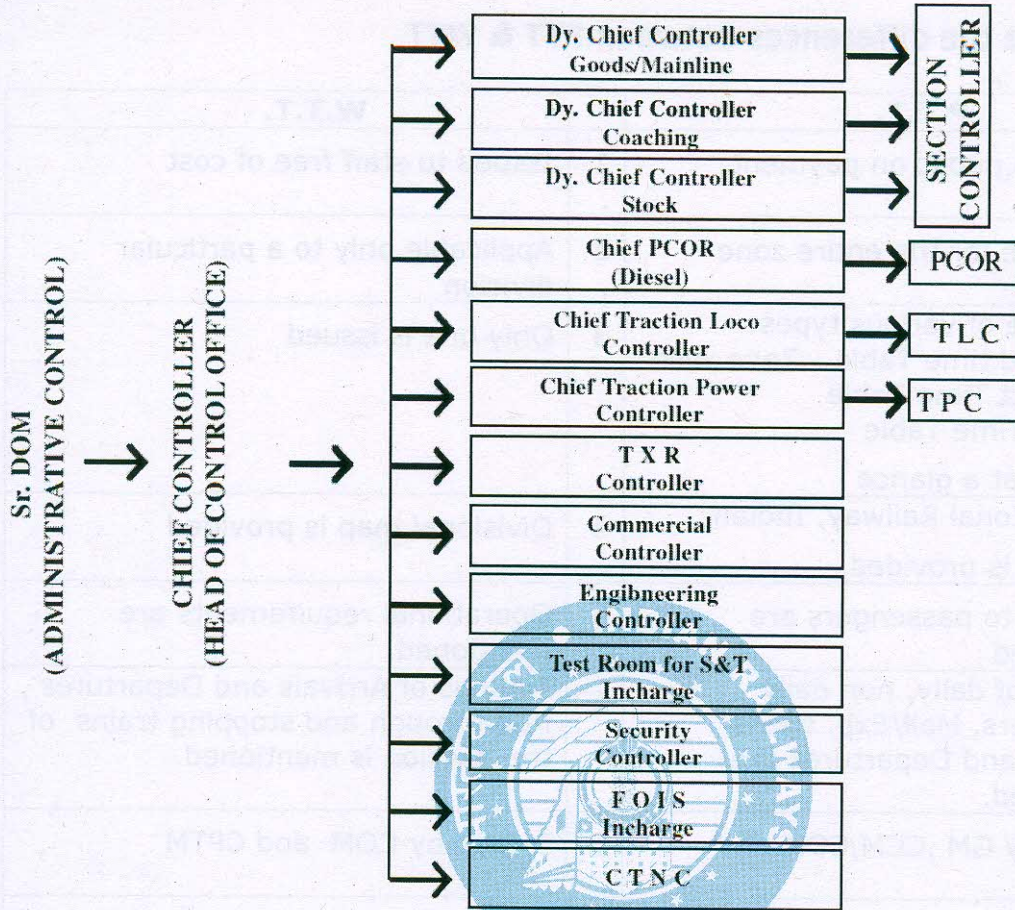
Control Organization

Q1. What are the differences between PTT & WTT

P.T.T.		W.T.T.	
1	Issued to public on payment	1	Issued to staff free of cost
2	Applicable for the entire zone	2	Applicable only to a particular division
3	These are of various types: 1.Detailed time Table - Zone wise 2.Abstract Time Table 3.Sheet Time Table 4.Trains at a glance	3	Only one is issued
4	Map on Zonal Railway, Indian Railways is provided.	4	Divisional map is provided
5	Facilities to passengers are mentioned	5	Operational requirements are mentioned.
6	Timings of daily, non daily passengers, Mail/Exp. trains Arrivals and Departures are mentioned.	6	Timings of Arrivals and Departures , Run through and stopping trains of the division is mentioned.
7	Issued by GM ,CCM,COM and CPTM	7	Issued by COM and CPTM
8	It consists following information a. Advance reservation. b. Reservation rules c. Rail travel concession d. Refund rules e. Amenities on train/station f. Fares	8	It contains other information pertaining to division section wise such as a. System of working b. Ruling gradient c. Standard of interlocking d. Sectional timings e. Skip timings f. Permanent speed restrictions g. Details of LC Gates.

Q2. Write about the Organizational setup of Control Office at Divisional level.

ORGANISATION OF A DIVISIONAL CONTROL



1. The Control Organization is one of the Principal Means by which the essential Coordination is obtained in Railway Operation.
2. It is from where, the planning activities of day to day working is done and the orders are issued to the stations and yards for execution.
3. It can be compared to the brain of human.
4. Normally the Divisional Control Office is located in the Divisional Head Quarters and connected to the station and yards through various communication systems.
5. Sr. DOM has the administrative control of the Divisional Control Office.
- 6 Chief controller is the head of the control organization.
7. For easy and effective controlling, the entire division is divided into various sections and a well knit communication is provided for monitoring minute to minute activities at stations and yards.
8. The Chief controller being the head of the control organization is assisted by Dy. Chief Controller in Freight and Passenger train operations.

